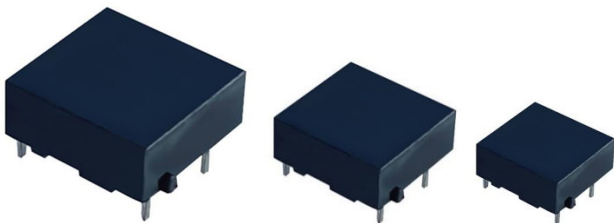


Power Line Communication Transformer, PLC

DCC no. PLS, PLD series released: 2022.06.10

XCX company is a specializing in power line communication transformers (Power Line Communication Transformer, referred to as PLC) products, with many years of design and manufacturing experience. The PLC products we introduce are often used in applications such as smart meters and concentrators. PLC can realize data communication through power lines, without additional communication lines, which reduces the cost of equipment. In addition to the common product specifications listed in this table, we can also provide customers with various customized PLC products to meet the needs of different occasions. For example, we can provide high-power, waterproof, dustproof and other PLC products to meet the needs of different environments.



◆ Product introduction

XCX Power Line Communication Transformer (PLC) is a product specially designed for smart meters and concentrators. Communication can be carried out through power lines, enabling fast and stable data transmission between smart meters and concentrators, and realizing functions such as power consumption monitoring and load control. XCX-PLC products are widely used in smart meters, concentrators and other fields, which can realize functions such as power consumption monitoring and load control, improve power consumption

efficiency and reduce energy waste. If you have special needs, we can also make customized designs to meet your requirements.

◆ Product Characteristics

- Power line communication (PLC).
- Low insertion loss.
- Low total harmonic distortion (Total Harmonic Distortion).
- Complies with insulation EN 60950 or UL1950.
- Compact housing design.
- Flame-retardant material, solid structure, beautiful and durable.
- Various specifications and sizes.
- Support high-speed and reliable data transmission.
- Applicable to various environmental conditions and network structures, with anti-interference ability.
- Scalability and flexibility to add, modify or delete nodes.
- Low cost, low power consumption, easy installation and maintenance.
- Can be customized.

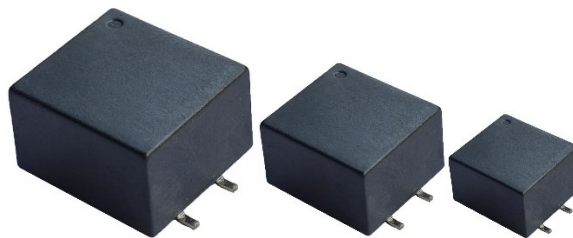
◆ Product application

- Smart Grid (Smart Grid): PLC can realize the automation and remote monitoring of the power system, thereby improving the reliability, stability and efficiency of the power grid.
- Smart Home (Smart Home): PLC can realize the interconnection and remote control between household appliances,

Power Line Communication Transformer, PLC

DCC no. PLS, PLD series released: 2022.06.10

- so as to realize intelligent home management.
- Industrial automation: realize the interconnection and remote monitoring between industrial equipment.
- Public utilities management: remote monitoring and control of public facilities (such as street lights, broadcasting, etc.).
- Internet of vehicles: interconnection and remote control between vehicles.
- Security monitoring: remote monitoring between security equipment.
- Medical health: remote interconnection between medical equipment.
- Environmental monitoring: interconnection and monitoring of environmental monitoring equipment.



◆ Dimensions and product specifications

P/N	Package	L*W*H(mm)	Inductance (mH)	Lk(μH) (Max)	DCR(mΩ) (Max)	Isat (mA)	Turns ratio	Range (kHz)	Hi-pot(Vac)
PLS-095-10	SMT	12.0*11.5*8.0	0.95	0.30	100	50.0	1:1	10-1kHz	6KV
PLS-090-20	SMT	12.0*11.5*8.0	0.90	0.30	200	30.0	1:1	10-1kHz	6KV
PLS-075-50	SMT	12.0*11.5*8.0	0.75	2.00	500	130.0	1:1:2	10-1kHz	4KV
PLS-068-10	SMT	12.0*11.5*8.0	0.68	1.00	100	100.0	1:1:2	10-1kHz	4KV
PLS-140-35	SMT	12.0*11.5*8.0	1.40	0.50	350	30.0	2:1	10-1kHz	3KV
PLS-070-40	SMT	14.5*13.7*10.2	0.70	1.00	400	120.0	1:1:2	10-1kHz	6KV
PLS-100-20	SMT	15.4*14.0*13.2	1.00	1.00	200	50.0	2:1:1	10-1kHz	2KV
PLD-068-26	DIP	14.5*13.7*10.2	0.68	1.00	260	120.0	1:1	10-1kHz	6KV
PLD-080-28	DIP	14.5*13.7*10.2	0.80	1.00	280	120.0	1.37:1	10-1kHz	6.5KV
PLD-090-20	DIP	12.0*11.5*7.6	0.90	1.20	200	35.0	2:1	10-1kHz	5.5KV
PLD-120-17	DIP	12.0*11.5*7.6	1.20	0.80	170	32.0	1.36:1	10-1kHz	5.5KV
PLD-140-20	DIP	12.0*11.5*7.6	1.40	0.30	200	30.0	1:1	10-1kHz	4KV